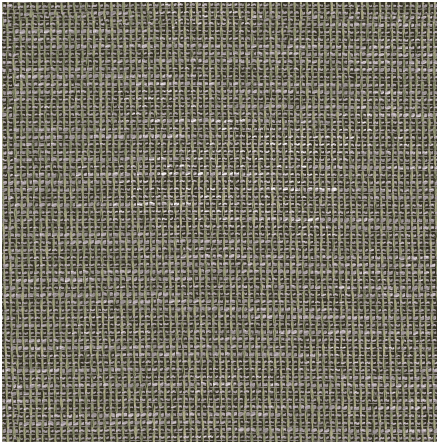




ZIMMER+ROHDE



Product data sheet





The cozy dimout fabric MOONSHADOW combines modern elegance with excellent functional properties. The three-dimensional woven structure also boasts a subtle sheen in a contemporary look and soft flowing feel. The reverse matches the front's color but with a finer weave.

In addition to its dimout function, the floor-length fabric helps insulate any room and has sound-absorbent functions. Thanks to its flame-retardant properties, this multifunctional fabric is suitable for both private and public spaces.

MOON SHADOW is made of 56% recycled polyester from used PET bottles.

Zimmer + Rohde

Moon Shadow FR RE

ARTICLENUMBER	10976795
COLLECTION	Zimmer + Rohde - F24
NUMBER OF COLORS	7
CATEGORY	Fabrics
MOTIVE	Small-scale pattern
FABRIC WIDTH	300 cm
EFFECTIVE WIDTH	-
WEIGHT	419 g/m²
MATERIAL	56% Polyester (Fire resistant, recycled), 44% Polyester (Fire resistant)
MARTINDALE	-
CARE INSTRUCTIONS	    
ADDITIONAL INFORMATION	-
PROPERTIES / USAGE	Room high washable      
ACOUSTIC PROTECTION	-
LIGHT FASTNESS (EN ISO 105-B02)	5
DYEING METHOD	yarn dyed
PILLING (EN ISO 12945-2)	-
RAPPORTWIDTH	-
RAPPORTHEIGHT	-
MANUFACTURING METHOD	-