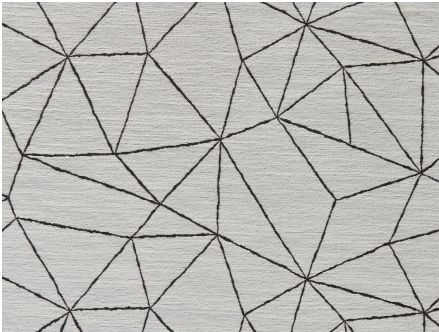




ZIMMER+ROHDE



Product data sheet

INTERSECTIONS is a double-sided jacquard fabric with a woolen feel. The polygonal network of hand-drawn lines is a charming contrast to the softly flowing materiality.

The densely woven fabric with attractive front and reverse is suitable not only for cozy window treatments, but also as a decorative bedspread.

This decorative fabric is produced in Germany and is climate neutral. The yarns are all sourced in Europe.

Zimmer + Rohde

Intersections

ARTICLENUMBER	10923992
COLLECTION	SKETCHBOOK
NUMBER OF COLORS	4
CATEGORY	Fabrics
MOTIVE	Graphic
FABRIC WIDTH	140 cm
EFFECTIVE WIDTH	-
WEIGHT	355 g/m ²
MATERIAL	33% Viscose, 27% Acrylic, 23% Polyester, 14% Flax (linen), 3% Cotton
MARTINDALE	-
CARE INSTRUCTIONS	    
ADDITIONAL INFORMATION	-
PROPERTIES / USAGE	-
ACOUSTIC PROTECTION	-
LIGHT FASTNESS (EN ISO 105-B02)	5 - 6
DYEING METHOD	yarn dyed
PILLING (EN ISO 12945-2)	-
RAPPORTWIDTH	68 cm
RAPPORTHEIGHT	35 cm
MANUFACTURING METHOD	-