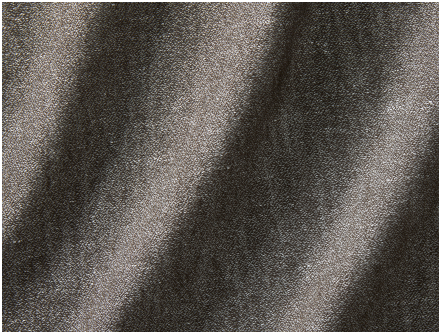




ZIMMER+ROHDE








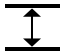

## Product data sheet

This quality consists of 66% recycled wool yarn, which is obtained from production waste with less energy and water consumption. A special feature of the yarn is its softness.

The exquisite combination of two very opposite materials makes this restrained decorative fabric a textile for real connoisseurs. A wonderful symbiosis of plant based linen and animal based wool is used in this casual melange fabric. Linen, known for its cooling effect in summer perfectly mixes with wool, which provides pleasant comfort on cold days. A sustainable product in every respect.

Zimmer + Rohde

### Highland RE

ARTICLENUMBER	10888998
COLLECTION	Personal Landscapes
NUMBER OF COLORS	6
CATEGORY	Fabrics
MOTIVE	Uni
FABRIC WIDTH	290 cm
EFFECTIVE WIDTH	-
WEIGHT	166 g/m <sup>2</sup>
MATERIAL	66% Wool (recycled), 34% Flax (linen)
MARTINDALE	-
CARE INSTRUCTIONS	    
ADDITIONAL INFORMATION	Recommend puddle on the floor
PROPERTIES / USAGE	Room high   Not washable  
ACOUSTIC PROTECTION	-
LIGHT FASTNESS (EN ISO 105-B02)	7
DYEING METHOD	yarn dyed
PILLING (EN ISO 12945-2)	-
RAPPORTWIDTH	-
RAPPORTHEIGHT	-
MANUFACTURING METHOD	-