



ZIMMER+ROHDE



### Adventures | Wallcovering Collection 2019

*Adventures*, this year's ZR wallpaper collection, celebrates every aspect of its namesake. That's why we are setting off on an exciting journey around the globe to seek out the places that inspired our wallpapers. We will be by your side every step of the way as you embark on your adventure, from the initial idea to the finished product, and will present you with a diverse range of extraordinary designs and techniques that elegantly encompass everything from the nuances of traditional craftsmanship to the perfection of the latest digital printing methods.

Our adventure begins in a distant, exotic land where expert craftsmanship is key, and it is this skill that forms the basis of the *Palawan* and *Pieces* products. These products have been slowly but surely crafted, dyed, cut and joined together using high-quality papers and delicate textiles with a perfection that is only possible in the hands of an expert. Traditional manufacturing techniques are given a modern twist and

applied in tandem with a precisely matched colour scheme, allowing *Palawan* and *Pieces* to develop a totally new and distinguished importance in your home, a little like souvenirs collected from past adventures.

Following the ZR fabrics collection, we are also venturing on an odyssey into dreamland and stepping foot into a magnificent landscape with *Wonderland Wall*, a landscape in which grass and flowers snuggle up to each other while colourful dragonflies perch on their leaves. High-quality digital printing brings out a brilliance from *Wonderland Wall*'s colours, making the large-scale designs elaborate details come to life.

This year's wallpaper collection from Zimmer + Rohde is an adventure for the senses – one that produces many special stories and conveys the feeling of luxury with unparalleled grace.

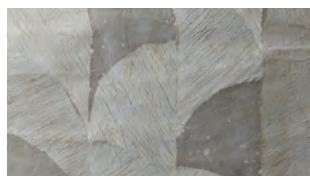
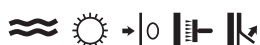


ZIMMER+ROHDE

## Adventures | Wallcoverings Collection 2019

### Palawan | 50055

3 Colourways  
Paper on Non-woven  
Width: 90 cm

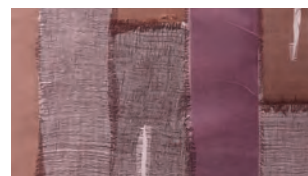
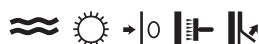


The abstract Art Deco design of *Palawan* is inspired by large banana leaves. Different papers have been carefully combined together and prepared and processed by hand in an intensive development process to create an exciting surface.

Both the background and the structured papers are initially dyed in natural colour nuances and partially pleated. They maintain their natural form through ripping and picking following a layout defined in advance. The upper edges of the individual leaves are then accentuated with colour. Finally, the individual leaves are stuck down overlapping one another in a precise, continuous distribution.

### Pieces | 50057

4 Colourways  
60 % Linen, 40 % Polyester  
on Non-woven  
Width: 90 cm



The *Pieces* wall covering is a hand-crafted masterpiece that cleverly brings materiality and modernity together.

The surface of *Pieces* consists of three fine webs with different structures and materials that are dyed, cut and manually processed. The individual pieces are then glued and fixed to the pre-coloured background.

The variation of thin gauze and coarse webbing combined with soft colour nuances creates an exciting overall effect and an inspiring interplay on the wall.

### Luzon | 50056

4 Colourways  
95 % Paper, 5 % Nylon  
on Non-woven  
Width: 90 cm



The *Luzon* wall covering is the result of particularly artistic and painstaking craftsmanship. The creation process starts with dyeing structured Japanese papers in varying colour nuances and laminating them onto a flexible background. The firmly twisted coloured paper cords are then attached. The next step sees strips cut into various widths using a die cutter and woven together on a hand loom. The fabric is finally laminated onto a fleece to guarantee stability on the wall.

*Luzon* captivates you with its high-quality materials and an elegant, three-dimensional surface effect. Its understated yet extraordinary design turns this wall covering into a real statement.

### Wonderland Wall | 50058

3 Colourways  
Polyester on Non-woven  
Width: 100 cm



The floral design of *Wonderland Wall* gives fantasy free rein. Meandering vines and leaves invoke images of an enchanted land where shimmering animals roam free and exotic fruits grow. Both variants – strong, vibrant shades and neutral, understated colours – whisk you away to a magical world.

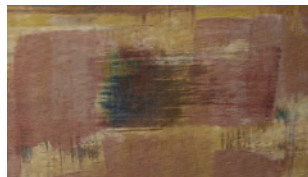
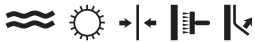
The multi-coloured digital print in the foreground is underscored by subtle shadowing that gives the design a three-dimensional effect. A soft, shimmering fil posé material serves as a background, and its laminated warp threads harmonise with the simulated warp print perfectly, lending *Wonderland Wall* a soft, textile surface.



ZIMMER+ROHDE

### Clouds Hill | 50059

4 Colourways  
Paper on Non-woven  
Width: 87 cm

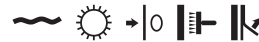


Strong brushstrokes with accents of colour create the design of *Clouds Hill*. Carefully planned layering and finely matched colour nuances makes the surface effect of this wall covering an interesting one. The digitally printed design is supported by a coarse fabric made from firmly twisted, fine paper yarn, lending *Clouds Hill* a three-dimensional structure.

The four colours of *Clouds Hill* vary from neutral understatement to eccentric colour combinations, therefore offering a diverse range of design possibilities.

### Paper Weave | 50061

6 Colourways  
Paper on Non-woven  
Width: 90 cm



The gorgeous, open woven structure of *Paper Weave* impresses with its hand-crafted character and the fine irregularities of its lively surface.

The raw paper yarn is initially bleached and dyed. Two contrasting paper yarns are then loosely twined and connected with one another to form a loose weave on a hand loom in the warp and weft. This fragile weave is laminated onto a metallic fleece with the utmost care.

What with the special contrast of the matte, two-tone paper yarn on a shimmer, metallic background and the pleasant, dynamic look of the weave, *Paper Weave* brings tradition and modernity together to create a high-quality wall covering.

### Coral Wall | 50060

5 Colourways  
Paper on Non-woven  
Width: 87 cm



Vibrant colours in five different variations play an influential role for the digitally printed design of *Coral Wall*. Finely matched nuances give life to either an expressive statement in the room or a subtle, understated surface solution for the wall.

Modern technology in the form of digital printing allows even fine details to be reproduced and lets the colours shine. The illusion of depth created by the design works in tandem with the paper yarn make up a coarsely woven, three-dimensional background, lending the surface a modern granulation.

### Boreal | 50062

4 Colourways  
100 % Vlies  
Width: 69 cm | Length: 10 m



A hand-painted design on a coarse canvas provided the template for this exclusive wallpaper. Innovative manufacturing processes and materials make it possible to realise the complexity of an authentic design using modern techniques. Silver or gold pigments lie on the surface of *Boreal* like a fine metal dust. The wallpaper gets its tactile patina from a transparent printing paste that gains volume from being heated during the manufacturing process.

The metallic effect absorbed by the horizontal stripes makes *Boreal* a stand out design to offering style to any room.